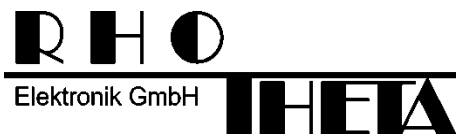


User Manual

Line Protection Box



Edited by:

RHOTHETA Elektronik GmbH
Kemmelpark
Dr.-Ingeborg-Haeckel-Str. 2
82418 Murnau
Germany

Tel.: +49 8841 4879 - 0
Fax: +49 8841 4879 - 15

Internet: www.rhotheta.de
E-Mail: email@rhotheta.de

*Copyright © RHOTHETA Elektronik GmbH
All rights reserved
- Issue: 2016/10/24 [Rev 1.00.a]
- Document-ID: 12-9-2-0024-3-1-61*

Note

The manufacturer reserves the right to make modifications at any time and without previous information of the here described product.

Content

1 Short Description..... 4

2 Connection Diagram..... 4

 2.1 Component Description5

 2.2 Description of External Cables5

3 Front View 6

 3.1 Cable Entry7

4 Mechanical Characteristics..... 8

5 Wiring Diagram 8

6 Installation..... 9

 6.1 Line Protection Box Mounting.....9

 6.2 Mounting Instruction10

 6.2.1 Cable Glands10

7 Notes..... 11

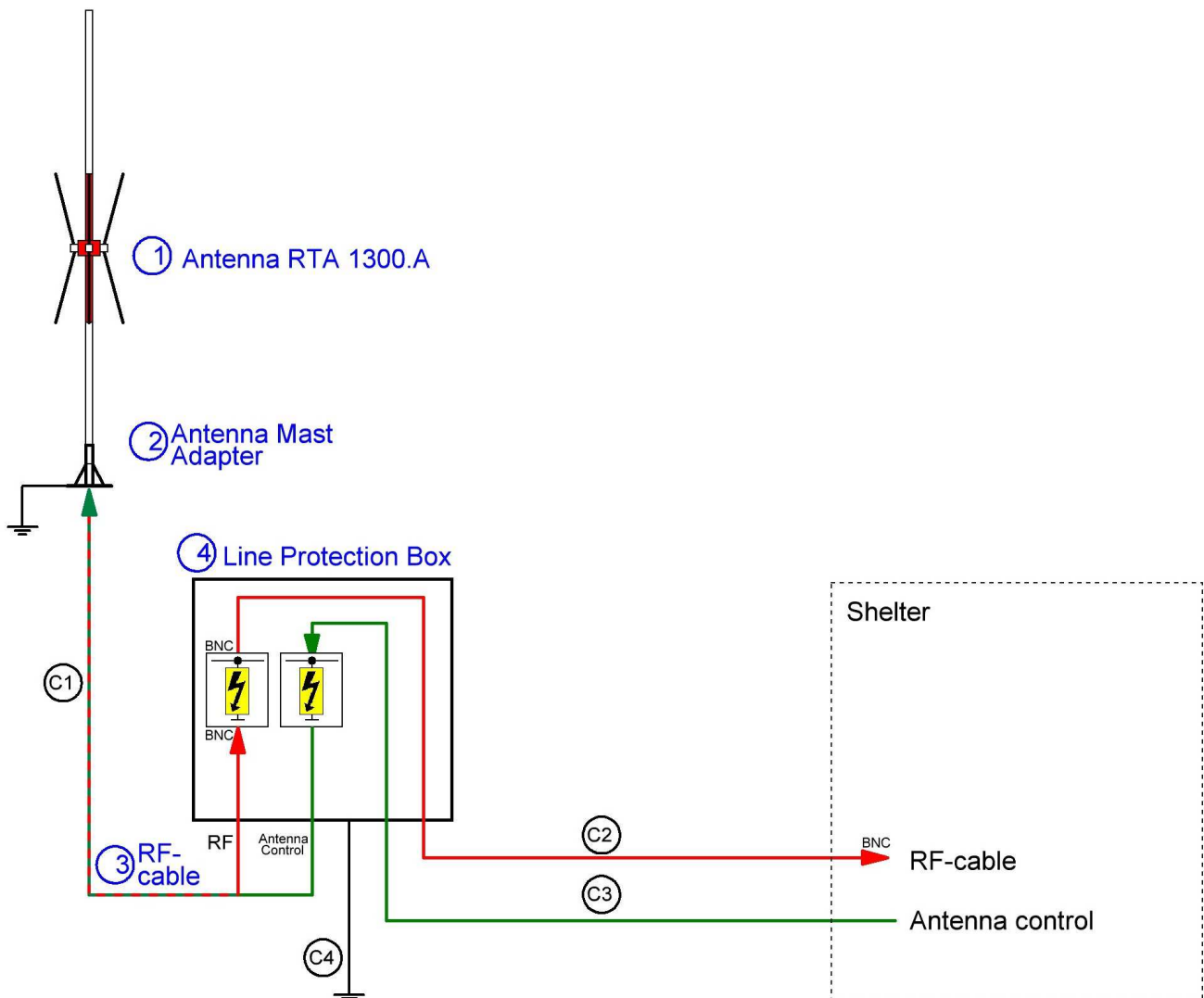
1 Short Description

The line protection box includes all necessary components for overvoltage protection of antenna control lines and the RF-Signal line (see Connection diagram).

The line protection box is necessary if the DF antenna is installed on a high mast (over 10 meters) or if the distance between the DF antenna and DF main unit is less than 15 meters.

The line protection system is housed in an IP66 water-tight stainless steel cabinet suitable for outdoor installation close to the antenna. Electrical interconnection is made by cables which enter the cabinet through sealed connectors located on the bottom.

2 Connection Diagram



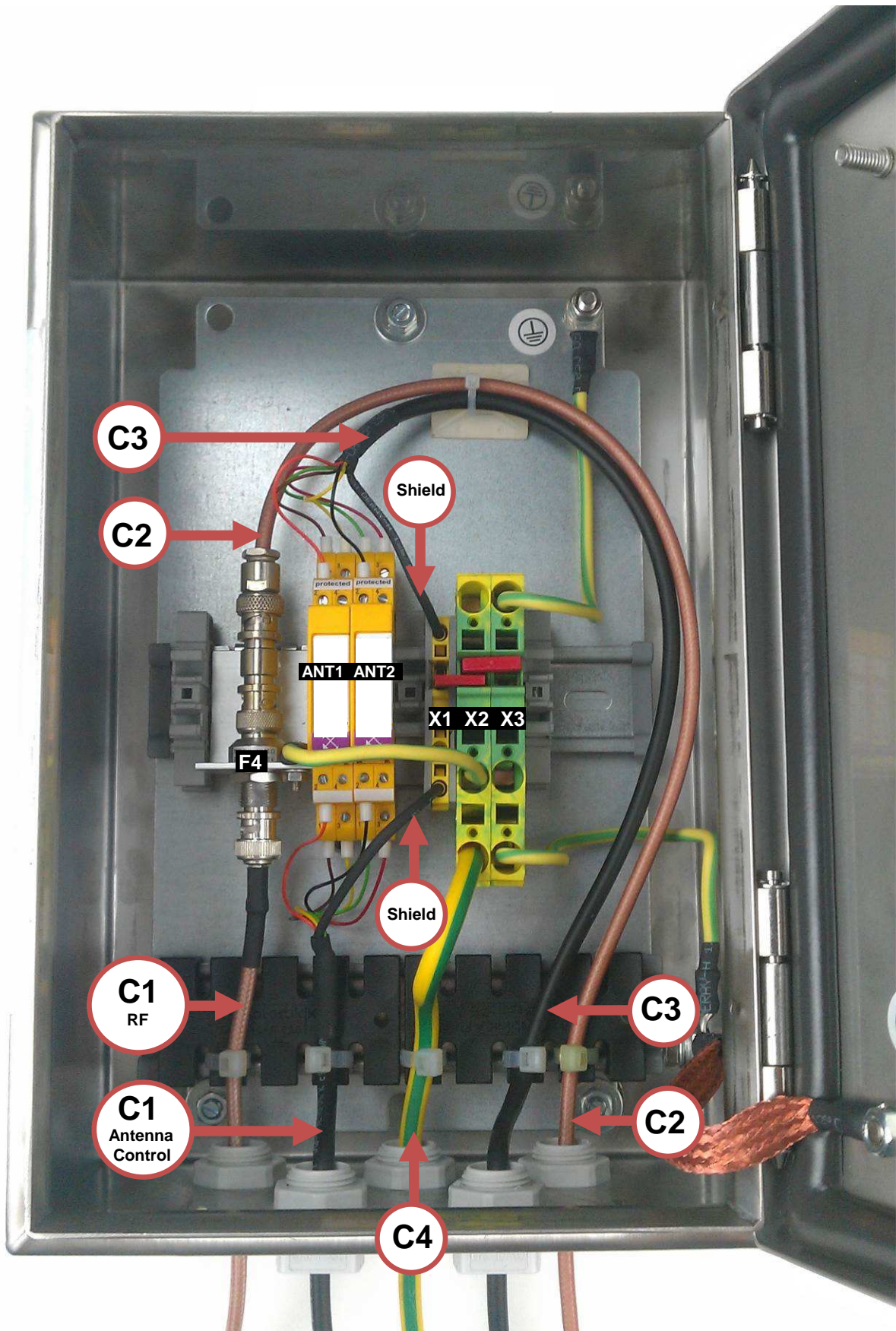
2.1 Component Description

System Components		
Nr.	Component	Description
1	Antenna RTA 1300.A	Antenna RTA 1300.A
2	Antenna Mast Adapter (Flange)	Flange used for the installation of the antenna on a shelter or on a mast.
3	RF-cable	RF-cable between Antenna Unit - Line Protection Box
4	Line Protection Box	The line protection box includes all necessary components for overvoltage protection of antenna control lines and RF-Signal.

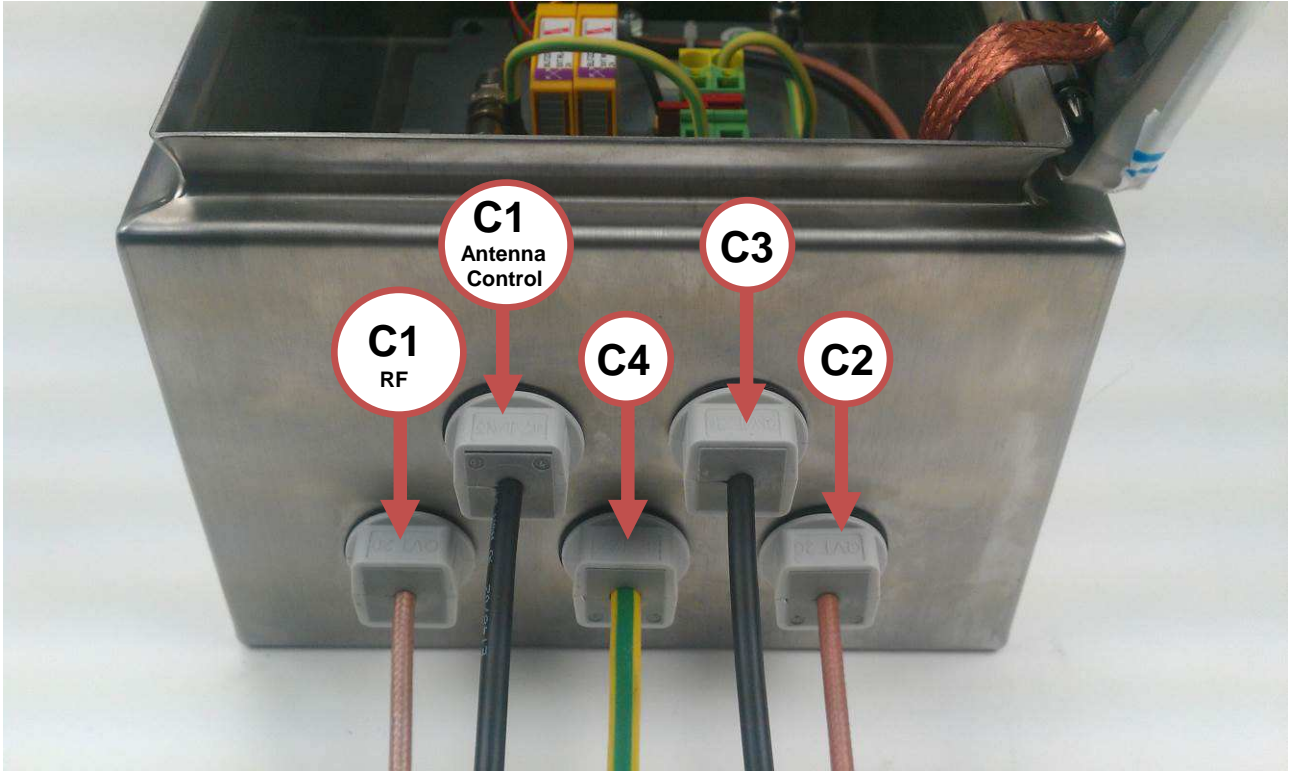
2.2 Description of External Cables

Cables			
Nr.	Description	Cable type	Length
C1	RF-cable between Antenna Unit – Line Protection Box	RHOTHETA Assemblies RTA-1307 A	4,5 m
C2	RF-cable between Line Protection Box – DF Main Unit	RG-400/U (RG-223)	18 m (max)
C3	Signal cable between Line Protection Box – DF Main Unit	6 x AWG 24 C UL, shielded	18 m
C4	Grounding cable	16mm ² (green yellow)	-

3 Front View



3.1 Cable Entry

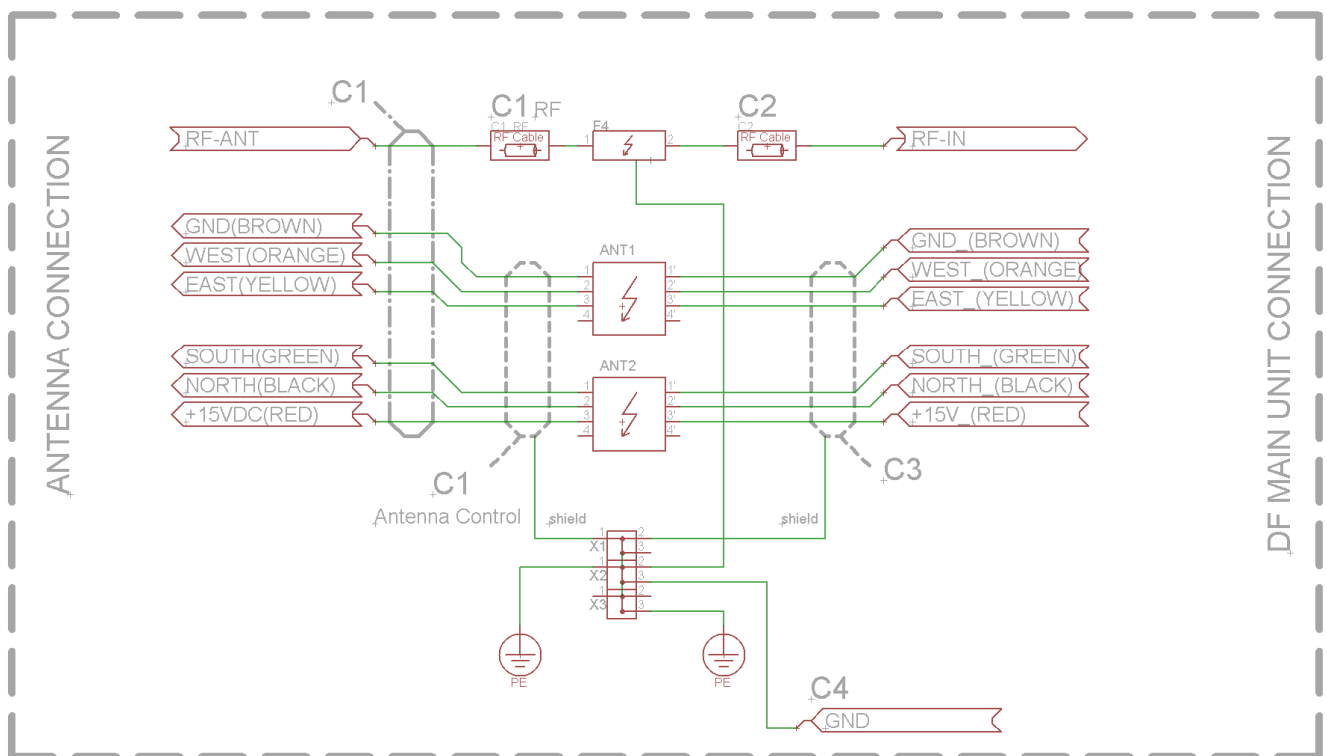


4 Mechanical Characteristics

Mechanical Characteristics						
Subsystem	Category IP	Material	Width	Height	Depth	Weight
Line Protection Box	IP 66	Stainless steel	200 mm	300 mm	155 mm	5 kg

5 Wiring Diagram

LINE PROTECTION BOX



6 Installation

The Line Protection Box should be installed close to the antenna.

6.1 Line Protection Box Mounting

The line protection box is housed in an IP66 water-tight stainless steel cabinet suitable for outdoor installation. For box mounting, the mounting holes must be drilled. The drill holes must be sealed after mounting.

Example: Place for holes for mounting on a wall

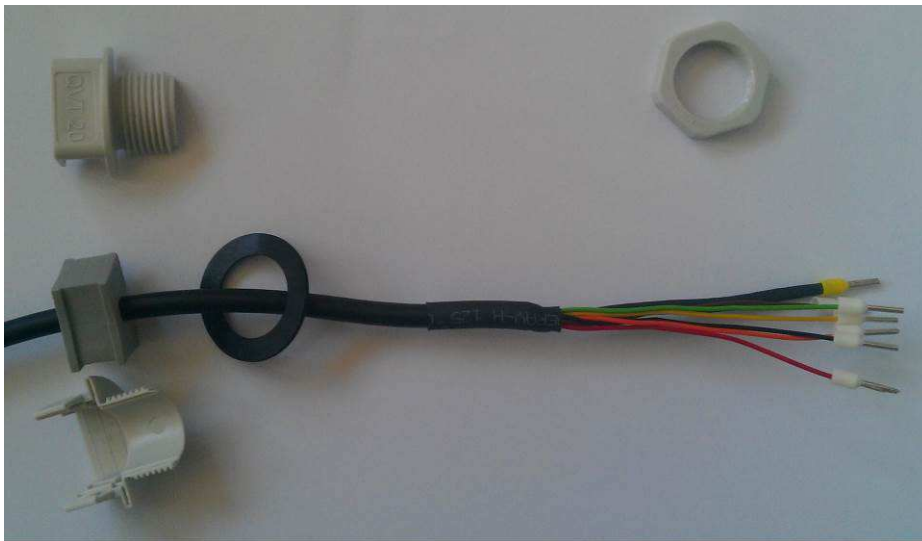


Attention! All drill holes must be sealed to avoid ingress of humidity.

6.2 Mounting Instruction

6.2.1 Cable Glands

The Cable gland is a circular split cable gland for quick and easy installation of preassembled cables or complete cable harnesses.



7 Notes